

**Tokai's Isotropic Graphite Data Sheet**

# HK-75

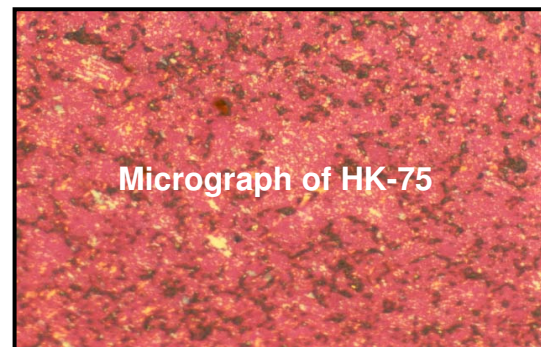
## 1. Typical Properties

Specific Gravity	g/cm <sup>3</sup>	1.82
Specific Resistance	μΩm	16.5
Flexural Strength	MPa	66.0
	Kgf/cm <sup>2</sup>	670
Shore Hardness	Shore	72
Average grain size	μm	4

All properties measured at room temperature.  
 Flexural Strength determined using three point loading

## 2. Standard Size

231 x 455 x 1245 mm



## 3. Application

HK-75 is ultra-fine grade of graphite and is used here high surface finishes and good edge wear conditions are critical. It also gives easy machining properties of high definition on corners and profiles. It is best used in the high quality end of the mould manufacturing process.

Surface finish: 20 vdi

